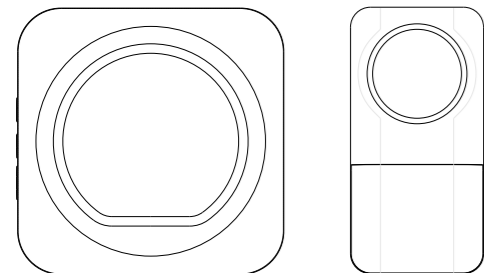


Wireless Plug-in Doorbell User Manual

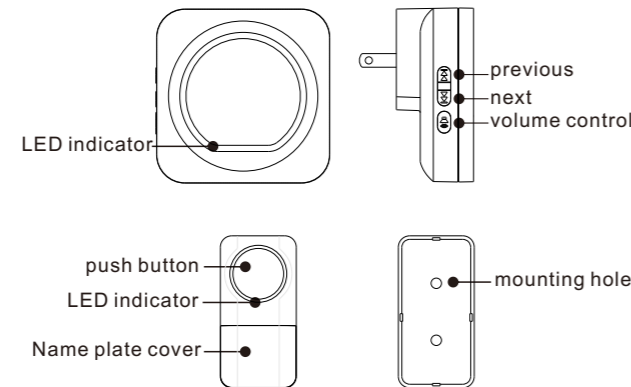
(Model: HD05)



This package includes:

- Wireless door chime
- Wireless push button
- Hardware pack
- Battery for push button

Product Diagram

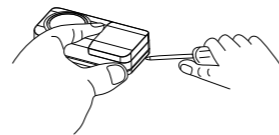


Battery Installation

A. Push button

1. Remove back cover by pushing in tab located at the bottom of the touch button unit with a small screwdriver.
2. Install an alkaline 23A 12V battery, make sure battery is oriented properly.
3. Put back the back cover into place.

1



B. Door Chime

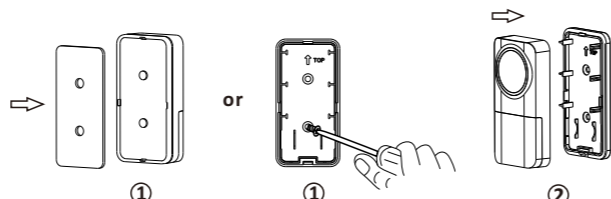
1. Just make sure the plug is suitable for you.

Mounting

Before mounting push button and chime, temporarily position them where you want them mounted. Press push button to verify chime and push button work properly. If chime does not sound, see Troubleshooting on page 5.

A. Mount push button

- Use either screws or double sided tape to mount push button
- To mount with screws, remove back of case by pushing tab on bottom with a small screwdriver.
- Attach back of case to door jamb or wall. Snap front of button on.
- To mount with double sided tape, make sure the surface of the door jamb or wall is clean and smooth.



2

B. Mount door chime

Just plug the door chime into standard outlet in room, then it will work.

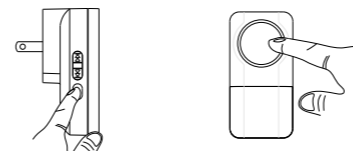
How to Operate?

1. Press the volume button to control the volume of melody. There are 5 adjustable volume levels: higher, high, medium, low, and mute.
2. Press the Previous/Next button to select the melody you like. There are 52 different melodies with 16 chords
3. Reset function: Press and hold the Previous/Next button for 3 seconds. The music will be reset to the default selection.
4. This doorbell comes with a memory function in case of unexpected power failure.

Code Learning

The code learning function allows you to expand your system with more push buttons or door chimes. Follow the instructions below for code learning.

1. Press and hold the Volume button on door chime for 5 seconds and release it until a sound is heard.
2. Press the push button (within 20 seconds), if a melody is heard, then code learning is successful. If not, repeat the above step to learn the code again.



3

Technical Data

- External input of door chime: AC 110V (US)/AC 220V (EU,UK,AU)
- Push button battery: 23A 12V (included)
- Volume: 0-110dB (5 levels including mute)
- Range: Up to 1000 feet (in the open air)
- Number of melodies: 52
- Power consumption of push button: <10mW
- Working frequency: 433.92MHz

Important

1. Door chime is designed for indoor use only.
2. Avoid mounting the push button on metal frames, and make sure the mounting surface is smooth.
3. Avoid mounting the chime above heat sources such as radiators, or in damp areas such as a kitchen or bathroom.
4. Please do not open and repair it without professional guide in order to avoid any breakdown of components.
5. Please use high quality alkaline batteries rather than carbon zinc batteries which are insecure and have shorter service life.
6. Please do not expose it to the sun and rain for a long time and keep it away from metallic object.
7. The range of the doorbell depends on location, temperature and battery condition.
8. If not using the doorbell for long periods, unplug the chime from socket and remove the battery from push button to prevent leakage.
9. Dispose of old battery in accordance with the relevant legislation

4

Troubleshooting

| Problems | Solutions |
|---|---|
| 1. Chime does not sound? | <ul style="list-style-type: none"> • Check orientation of push button battery • Check the battery, replace with new batteries if necessary • Check whether the plug is well inserted into the socket. • Make sure the push button and the chime codes are the same. If not follow the code learning instruction to reset the code. |
| 2. Batteries seem OK, but the chime does not work when installed? | <ul style="list-style-type: none"> • Do not mount the chime or doorbell button on metal or near metal studs. This reduces the transmitting range. • Don't mount the chime too close to ground level concrete slabs. This may also reduce the range. Mount the chime away from the floor. • Try different locations for the chime closer to the doorbell button. Also try to orient the chime at a different angle to increase the range. |
| 3. Push button does not work? | <ul style="list-style-type: none"> • Re-install the battery in push button. |

5